

DESIGN NOTES:

- CONCRETE SHALL HAVE A 28 DAY MINIMUM COMPRESSIVE STRENGTH OF 6500 PSI

PRODUCTION NOTES:

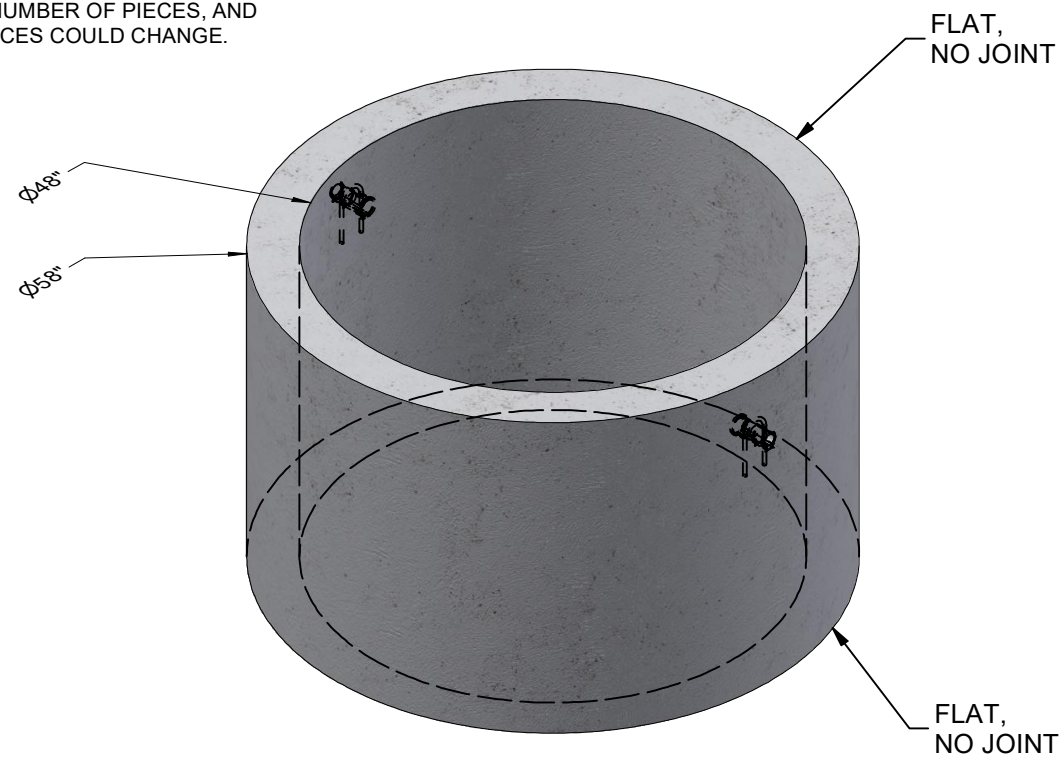
- LIFTING INSERTS SHALL BE INSTALLED PER MANUFACTURER'S REQUIREMENTS
- APPLIED FINISH - NONE
- INTERNAL LINER/COATING - NONE
- EXTERNAL LINER/COATING - NONE

BILL OF MATERIALS

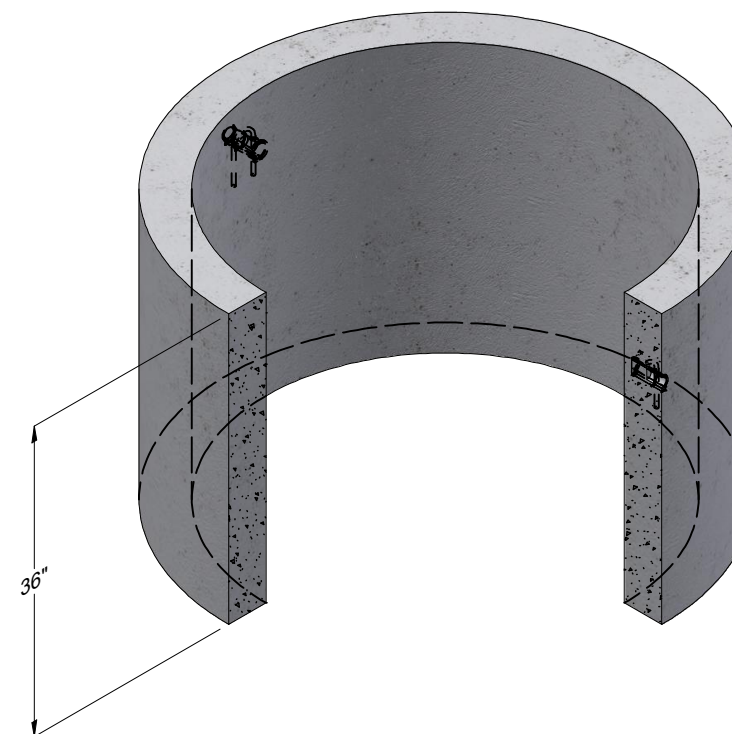
ITEM	UNIT QTY	QTY	PART NUMBER	DESCRIPTION
1	17.342 ft^3	17.342 ft^3	100011428	CONCRETE MIX GENERIC 6500 PSI
2	1	1	200119582	REINFORCING MAT 200119582
3	13.123 in	26.247 in	100003074	REINF #3 REBAR ASTM A706/A615 GR60
4	1	2	100007288	INSERT PLASTIC LIFT PIN MH 1095A

**PRELIMINARY DRAWING
NOT FOR CONSTRUCTION**

THICKNESSES, NUMBER OF PIECES, AND
TYPES OF PIECES COULD CHANGE.



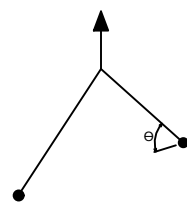
ISO REF



SECTION REF.

RIGGING DIAGRAM*

F



LIFTING NOTES

■ THIS CONCRETE PRODUCT IS DESIGNED TO BE LIFTED AT 2500 PSI WITH 2 LIFT CONNECTIONS EQUALLY LOADED TO 2 LIFTING POINTS AT A MINIMUM 60° SLING ANGLE, MEASURED FROM HORIZONTAL.

*All rigging shall be design by a qualified professional. Loading diagrams show illustrations of possible rigging setups to achieve the required sling angle and load leg equalization. Other valid rigging configurations are possible. A qualified professional must be consulted prior to lifting.

BURY DEPTH: Above Ground to N/A

WATER LEVEL: Below Structure APPROX. WEIGHT: 2607.09 Lbs

DESIGN SPEC: ASTM C478 LOADING SPEC: N/A

REINFORCEMENT TYPE: WWR Plain LIFTING TYPE: Insert

CHANGE HISTORY

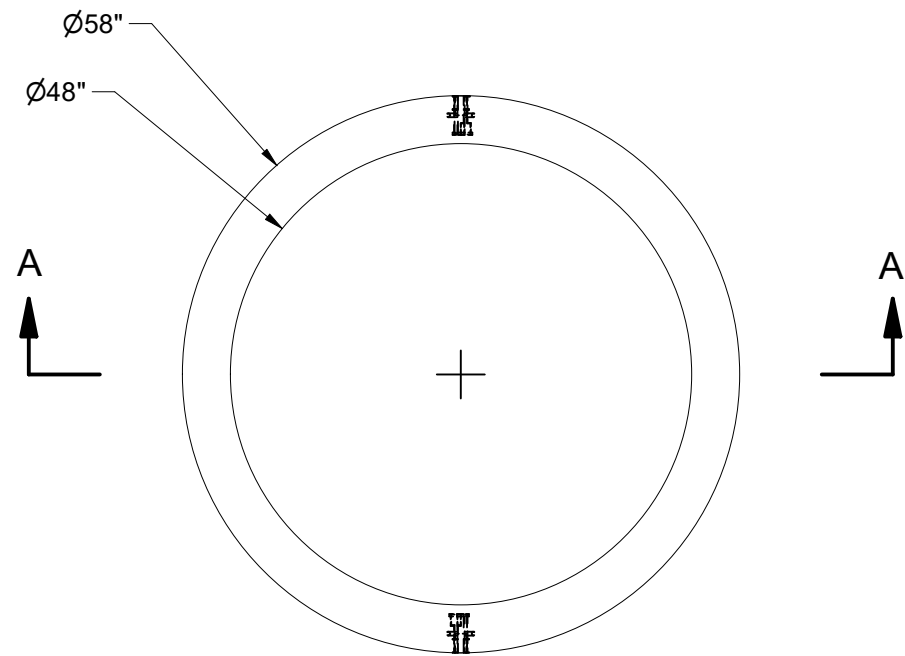
NO.	DESCRIPTION	DATE	BY
1		5/27/2026	BCM
2			
3			

DESCRIPTION: Manhole D4858x36 Barrel Flat Above Ground		REV: A-1
CASTING LAYOUT		SHEET: 1 OF 3
PART NUMBER: 200119583	DRAWN BY:	
CREATED:	MODIFIED:	

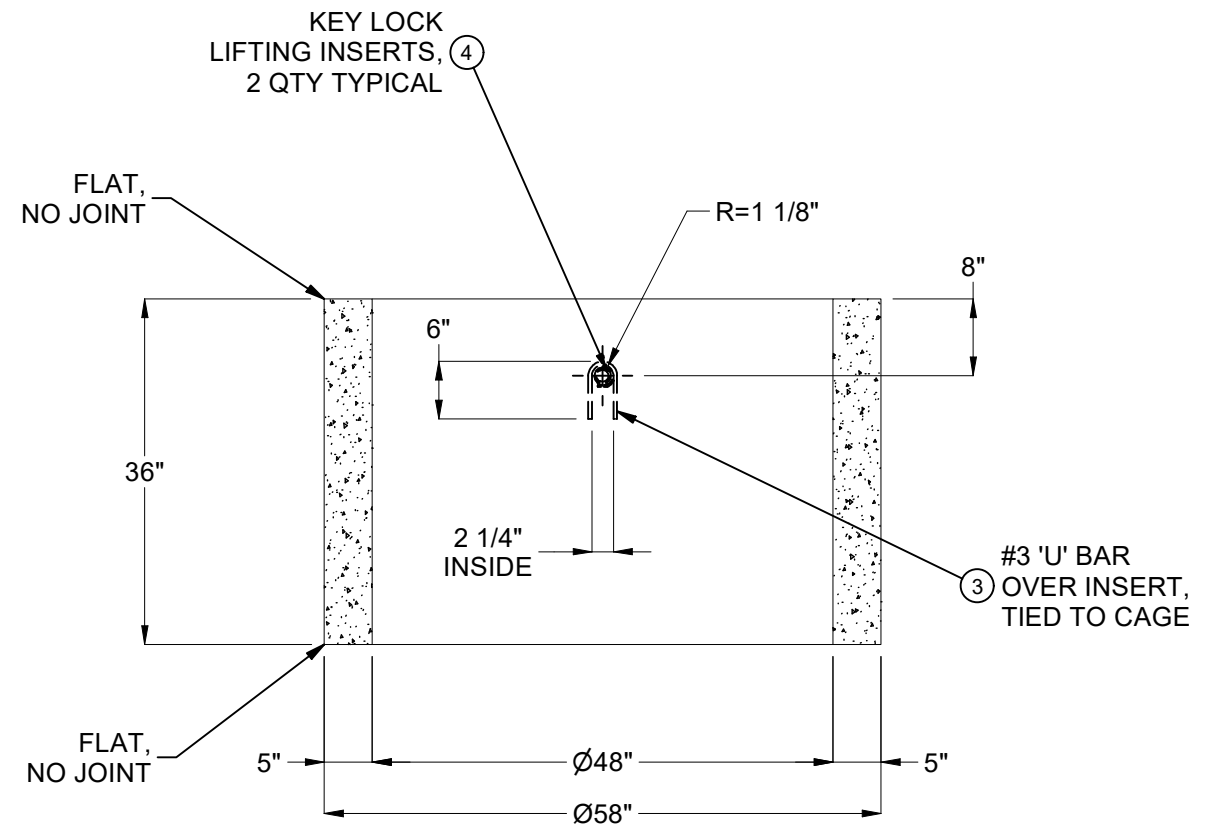
200119583.dwg

**PRELIMINARY DRAWING
NOT FOR CONSTRUCTION**

THICKNESSES, NUMBER OF PIECES, AND
TYPES OF PIECES COULD CHANGE.



PLAN VIEW



SECTION A-A

200119583.dwg

BURY DEPTH:		Above Ground to N/A		DESCRIPTION:	Manhole D4858x36 Barrel Flat Above Ground	REV:	A-1		
WATER LEVEL:	Below Structure	APPROX. WEIGHT:	2607.09 Lbs			CASTING DRAWING		SHEET:	2 OF 3
DESIGN SPEC:	ASTM C478	LOADING SPEC:	N/A			PART NUMBER:	200119583	DRAWN BY:	
REINFORCEMENT TYPE:	WWR Plain	LIFTING TYPE:	Insert			CREATED:		MODIFIED:	